

AASRAA BUDGET

ECONOMY FOLDABLE MANUAL WHEELCHAIR

AR209B

Aasraa Budget Wheelchair provides a **budget-friendly travel experience** for users. It is designed to consider the user's travelling nature and the frequent need to **load into car boots**. The Budget Wheelchair comes with **Front-Lift-Legrests**, which can be folded up to shorten the length of the wheelchair so it can easily fit in the boot of cars and thus can be used to travel easily.

★ **MRP: INR 7,899.00**



DAILY USE WHEELCHAIR



100 KG
MAX LOAD CAPACITY



NYLON CANVAS
SEAT FABRIC TYPE



450MM (18")
SEAT WIDTH



MAG WHEELS
REAR WHEEL TYPE



15.2 KG
NET WEIGHT



17.5 KG
GROSS WEIGHT



105 X 67 X 86 CM
OPEN DIMENSIONS



86 X 28 X 90 CM
BOX DIMENSIONS

TRUCK SIZE	APPROX QTY
8'	16-20
14'	50-60
17'	80-90
22'	110-120
27'	140-160
34'	280-300
40'	320-350

LOADING CAN VARY DEPENDING
ON VEHICLE INNER DIMENSIONS

SCAN FOR
PRODUCT
VIDEO &
DETAILED
SPECS



COMPACT AND TRAVEL FRIENDLY
WITH FRONT LIFT LEGRESTS

HIGHLIGHTS



LIGHTWEIGHT AND EASY TO CARRY



FITS IN **ALL** CAR BOOTS



EASILY MOVES OVER ROUGH SURFACES
AND BUMPS



FRONT LIFT LEGREST

FEATURES



**HEIGHT ADJUSTABLE
FOOTREST**



**360° FRONT WHEEL
SWIVEL CASTOR**



FLIP UP FOOTPLATE



**SOFT, PADDED
ARMPAD**



**RUBBER TYRES WITH
GRIP**



**SOLID MAG REAR
WHEELS**



PARKING BRAKES



**ADJUSTABLE SEAT
BELT**



**FLAT-TOP END-CAP
FOR TILT**



**PLASTIC FRONT
BRACKET**



SELF PROPELLING



**PLASTIC SIDE
GAURDS**



**ANTI SLIP PLASTIC
FOOTREST**



**16 GAUGE SCISSOR
CROSSBAR**



**COMPACT &
FOLDABLE**



**NYLON CANVAS
UPHOLSTREY**

SPECIFICATIONS

DIMENSIONS	MM	INCH
OPEN LENGTH	1050	41
OPEN WIDTH	670	26
FOLDED WIDTH	280	11
HEIGHT	860	34
SEAT WIDTH	450	18
SEAT DEPTH	400	16
BACKREST HEIGHT (FROM SEAT)	360	14
BACKREST THICKNESS	5.5	0.2
SEAT THICKNESS	5.5	0.2
EXTRA CUSHION THICKNESS	N/A	N/A
ARMREST HEIGHT FROM SEAT	300	12
SEAT HEIGHT FROM FLOOR	470	19
SEAT HEIGHT FROM FOOTREST (LOWEST TO HIGHEST)	400 TO 510	16 TO 20
GROUND CLEARANCE	55	2.2
FOOTREST HEIGHT FROM FLOOR (LOWEST TO HIGHEST)	27 TO 135	1.1 TO 5.3
FRONT WHEEL DIAMETER	193	8
REAR WHEEL DIAMETER	580	22.8
DISTANCE BETWEEN SEAT & FOOTREST	400	16
BOX LENGTH	860	34
BOX WIDTH	280	11
BOX HEIGHT	900	35

DIMENSION	MEASUREMENT
WEIGHT OF WHEELCHAIR (NET WEIGHT)	15.2 KG
WEIGHT WITH PACKAGING (GROSS WEIGHT)	17.5 KG
TURNING RADIUS	1.65 M
LOAD CAPACITY	100 KG

TECHNICAL SPECIFICATIONS	
PROPULSION SYSTEM	MANUAL-SELF
FRAME MATERIAL	Powder Coated Mild Steel (Carbon Steel) (MS ERW 22.2x1.0 MM - 19 GAUGE)
FRAME COLOR	BLACK GLOSSY
CROSSBAR TYPE	SINGLE SCISSOR PIPE MECHANISM
CROSSBAR MATERIAL	Powder Coated Mild Steel (Carbon Steel) (MS ERW 25.4x1.5 MM - 16 GAUGE)
CROSSBAR COLOR	BLACK GLOSSY
SEAT TYPE	NORMAL
UPHOLSTREY	NYLON CANVAS
UPHOLSTREY COLOR	BLACK
EXTRA CUSHION	N/A
EXTRA CUSHION COLOR	N/A
FRONT WHEEL MATERIAL	MAG Design PP Castor - 6 Spoke With PVC Tyre
REAR WHEEL MATERIAL	MAG PPCP Wheel - 6 Spoke
REAR TYRE MATERIAL	SOLID NATURAL RUBBER
WHEELCHAIR TYPE	FOLDABLE
FOOTREST TYPE	Height Adjustable, Swing Open/Close
FOOTREST MATERIAL	POLYMER PPCP
LEGREST TYPE	FLIP-UP / FRONT LIFT
BACKPOCKET	NO
ARMREST TYPE	FIXED
ARMREST MATERIAL	FOAM PADDED REXINE
HEADREST	NO
ANTI TIPPER WHEELS	NO
PROPELLING RING	SMOOTH POLYMER PPCP DESIGN
BRAKING SYSTEM	ANTI-SKID MANUAL PARKING BRAKE SYSTEM
ATTENDANT BRAKES	NO
PUSH HANDLES	YES, WITH PVC GRIPS
PROVISION OF COMMODE	NO
CALF STRAP MATERIAL	N/A
SIDE GAURD MATERIAL	POLYMER PPCP
ACCESSORIES	N/A

SUITABLE FOR USERS



~~SENIORS~~



~~CHILDREN~~



ADULTS



WOMEN



~~ATHLETES~~



~~PWD~~



PATIENTS



~~PREGNANT~~



SHORT
TERM
USERS

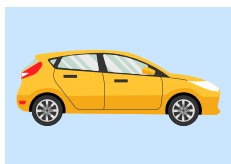


~~CEREBRAL
PALSY~~

SUITABLE FOR ACTIVITY



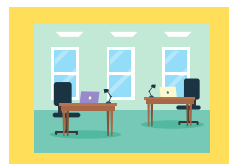
FLIGHT/TRAIN



CAR



~~BATHROOM~~



OFFICE



MARKET

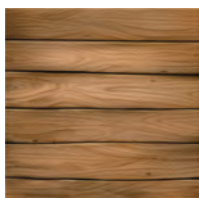


OUTDOOR

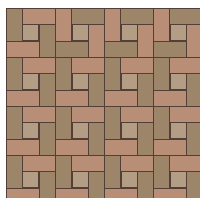
SUITABLE FOR SURFACE



TILE



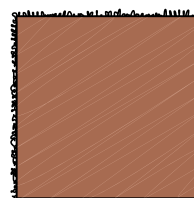
WOOD



PAVERS



ASPHALT



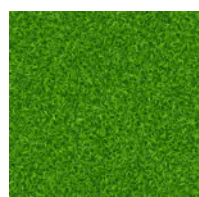
CARPET



~~SAND~~



~~GRAVEL~~



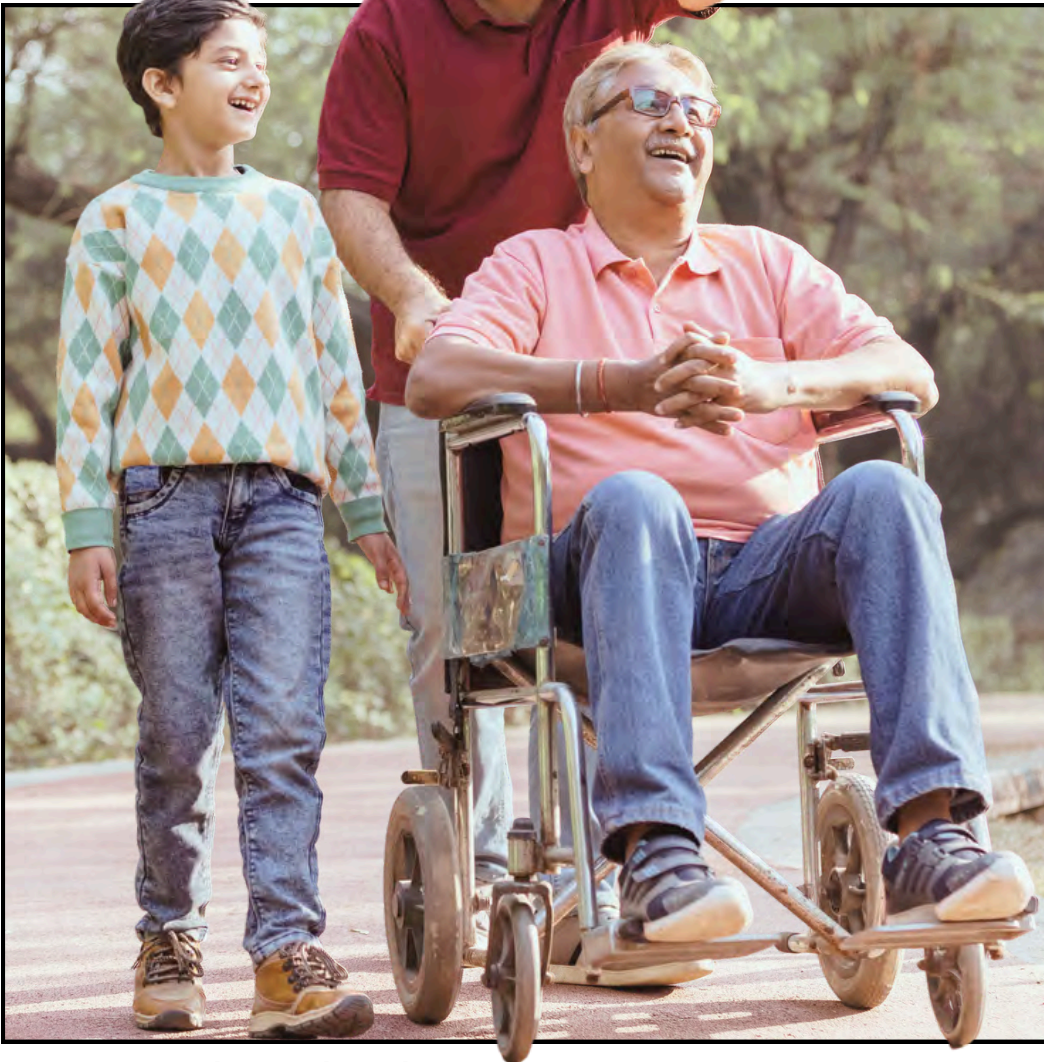
GRASS



आपका भरोसा, *aasraa* का वादा

your trust, aasraa's assurance

Leading brand in India for wheelchairs (manual and electric) and other mobility and orthopaedic aids



Manufactured & Marketed By:

PEAAR HEALTHTECH LLP

Plot No 12, Sector 4
Faridabad 121004, Haryana (INDIA)

(+91) 828 747 6144 | (+91) 875 005 0480

contact@peaar.co.in



www.aasraa.co.in