

AASRAA CHROMEMATE+

LIGHTWEIGHT RECIPROCAL WALKERS



ARW35C

The ARW35C is a **lightweight, foldable** walker crafted from **strong** aluminum with a sleek **chrome finish**. It features two front wheels for **smoother** movement without the need to lift, plus a simple **push-button** for **easy folding**. Switch between **Stable Mode** for extra support or **Reciprocal Mode** for a natural walking rhythm. With **8 height adjustment levels**, ergonomic **PVC grips**, and **anti-slip rubber shoes** reinforced with metal washers, it's built for long-lasting comfort and safety. All **screws are covered** for added protection.

★ **MRP: INR 3999.00**



ALUMINIUM WALKER WITH WHEELS
(SHINY CHROME FINISH)

-  **120 KG**
MAX LOAD CAPACITY
-  **DUAL MODES**
RECIPROCATING
-  **8-LEVELS**
HEIGHT ADJUSTABLE
-  **PVC**
GRIP TYPE
-  **2.45 KG**
NET WEIGHT
-  **3.8 KG**
GROSS WEIGHT
-  **53 X 45 X 76 CM**
OPEN DIMENSIONS
-  **61 X 12 X 77 CM**
BOX DIMENSIONS



SUPER COMPACT, LIGHTWEIGHT &
FOLDABLE

TRUCK SIZE	APPROX QTY
8'	12-16
14'	40-50
17'	70-80
22'	100-110
27'	130-140
34'	250-270
40'	290-310

LOADING CAN VARY DEPENDING
ON VEHICLE INNER DIMENSIONS

SCAN FOR
PRODUCT
VIDEO &
DETAILED
SPECS



HIGHLIGHTS



SCREW WITH SAFETY CAPS



5 INCH PVC CASTOR WHEEL



EASY FOLDABLE & COMPACT



LIGHTWEIGHT & EASY TO CARRY



WATERPROOF PVC GRIPS



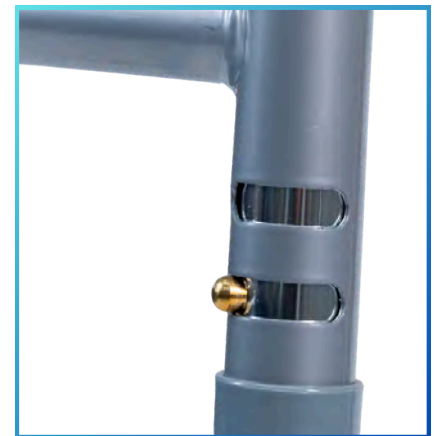
8-LEVEL HEIGHT ADJUSTABLE



ANTI SLIP SHOES



WALKING & FIXED MODE



EASY PUSH BUTTON TO SWITCH MODE

SPECIFICATIONS

TECHNICAL SPECIFICATIONS	
ASSEMBLY SYSTEM	Fully Assembled
FRAME MATERIAL	Anodised Aluminium (18 Gauge)
FRAME COLOR	Shiny Silver Chrome
FOLDABLE / FIXED	FOLDABLE
GRIP TYPE	PVC GRIP
EXTRA GRIP COVER	NO
ADJUSTMENT LEVEL	Height Adjustable Upto 8 Levels
Centre Bar Color	Metallic Grey
Foot Tip Material	Anti Slip Grip
Front Wheel Type	PVC Castor Wheel 5 Inch
Reciprocal	YES

DIMENSIONS	MM	INCH
OPEN LENGTH (AT BOTTOM)	530	21
OPEN WIDTH (AT BOTTOM)	450	18
TOTAL HEIGHT (LOWEST TO MAX)	760-920	30-36
GAP BETWEEN EACH HEIGHT ADJUSTMENT (RANGE)	20	1
GRIP DISTANCE FROM JOINT	45	2
RECIPROCAL RANGE	140	6
FOLDED LENGTH	600	24
FOLDED WIDTH	100	4
FOLDED HEIGHT	760	30
FRONT WHEEL DIAMETER	130	5
BOX LENGTH	610	24
BOX WIDTH	120	5
BOX HEIGHT	770	30

DIMENSION	MEASUREMENT
WEIGHT OF WALKER (NET WEIGHT)	2.45 KG
WEIGHT WITH PACKAGING (GROSS WEIGHT)	3.8 KG
TOTAL LEVELS OF HEIGHT ADJUSTMENT	8
LOAD CAPACITY	120 KG

SUITABLE FOR USERS



SENIORS



CHILDREN



ADULTS



WOMEN



ATHLETES



PWD



PATIENTS



PREGNANT



SHORT TERM USERS



CEREBRAL PALSY

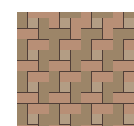
SUITABLE FOR SURFACE



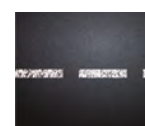
TILE



WOOD



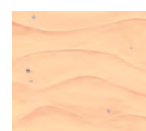
PAVERS



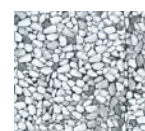
ASPHALT



CARPET



SAND



GRAVEL



GRASS



आपका भरोसा, *aasraa* का वादा

your trust, aasraa's assurance

Leading brand in India for wheelchairs (manual and electric) and other mobility and orthopaedic aids



Manufactured & Marketed By:

PEAAR HEALTHTECH LLP

Plot No 12, Sector 4
Faridabad 121004, Haryana (INDIA)

(+91) 828 747 6144 | (+91) 875 005 0480

contact@peaar.co.in



www.aasraa.co.in