

AASRAA POWER STAIR-X

STAIR CLIMBING ELECTRIC WHEELCHAIR

ARA01B

AASRAA POWER STAIR-X is a premium **attendant-controlled stair-climbing power wheelchair** designed for safe assisted mobility on stairs and smooth **manual use on flat surfaces**. With a sturdy **aluminium frame, foldable design, detachable lithium battery**, and an easy **up/down control panel**, it offers reliable **stair ascent and descent** with its **reliable track system, robust wheels** and **comfortable, antimicrobial seating** for everyday use.

★ **MRP: INR 1,69,999**



CLIMB STAIRS AUTOMATICALLY

-  **200 KG**
MAX LOAD CAPACITY
-  **REXINE**
SEAT FABRIC TYPE
-  **380MM (15")**
SEAT WIDTH
-  **MAG WHEELS**
REAR WHEEL TYPE
-  **32 KG**
NET WEIGHT
-  **44 KG**
GROSS WEIGHT
-  **77 X 63 X 116 CM**
OPEN DIMENSIONS
-  **70 X 37 X 110 CM**
BOX DIMENSIONS

| TRUCK SIZE | APPROX QTY |
|------------|------------|
| 8' | 12-16 |
| 14' | 40-50 |
| 17' | 70-80 |
| 22' | 100-110 |
| 27' | 130-140 |
| 34' | 250-270 |
| 40' | 290-310 |

SCAN FOR
PRODUCT
VIDEO &
DETAILED
SPECS



LOADING CAN VARY DEPENDING ON VEHICLE INNER DIMENSIONS



EASY OPERATION - CLIMBS UP & DOWN THE STAIRS

HIGHLIGHTS



SIMPLE CONTROLLER WITH LED DISPLAY TO CLIMB UP & DOWN STAIRS



FLIP UP FOOTPLATE



DETACHABLE LITHIUM BATTERY



PULL OUT TRACK SYSTEM THAT LOCKS ON THE STAIRS

FEATURES



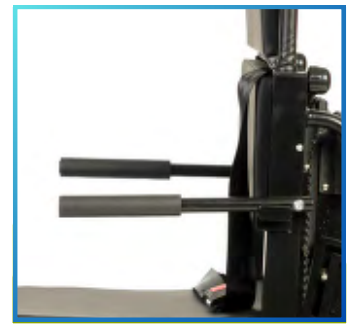
**ABILITY TO CLIMB UP
& DOWN STAIRS**



**360° FRONT WHEEL
WITH ALUMINIUM
FORK**



FLIP UP FOOT PLATE



**SOFT, FOAM PADDED
ARMPAD**



**PUNCTURE PROOF
PVC TYRES WITH
GRIP**



**DESIGNER MAG REAR
WHEELS**



**HAND BRAKE WITH
PARKING LOCK**



**ADJUSTABLE SEAT
BELT**



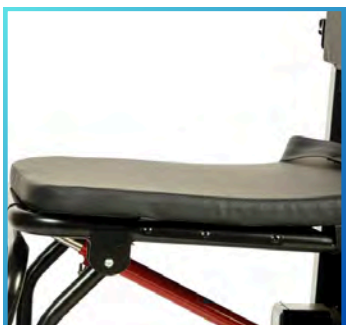
**SMART CONTROLLER
WITH LED DISPLAY**



**BACK HANDLES FOR
EASY TO MOVE**



**HEIGHT ADJUSTABLE
HANDLE WITH
HEADREST**



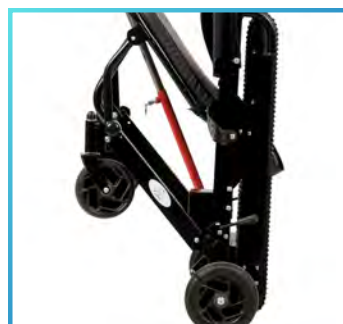
**COMFORTABLE
WATERPROOF
CUSHIONED SEAT**



**DETACHABLE,
COMPACT LITHIUM
BATTERY**



**270° SWING-UP
ARMRESTS**



**COMPACT &
FOLDABLE**



**PULL OUT TRACK
SYSTEM**

SPECIFICATIONS

| DIMENSIONS | MM | INCH |
|--|------|------|
| OPEN LENGTH | 765 | 30 |
| LENGH WITH FOLDED LEGRESTS | 640 | 25 |
| OPEN WIDTH | 630 | 25 |
| FOLDED WIDTH | 455 | 18 |
| MINIMUM HEIGHT | 1000 | 39 |
| MAXIMUM HEIGHT | 1420 | 56 |
| SEAT WIDTH | 380 | 15 |
| SEAT DEPTH | 455 | 18 |
| BACKREST HEIGHT (FROM SEAT) | 360 | 14 |
| BACKREST THICKNESS | 31 | 1 |
| SEAT THICKNESS | 31 | 1 |
| EXTRA CUSHION THICKNESS | NA | NA |
| ARMREST HEIGHT FROM SEAT | 200 | 8 |
| SEAT HEIGHT FROM FLOOR | 560 | 20 |
| SEAT HEIGHT FROM FOOTREST (LOWEST TO HIGHEST) | 375 | 15 |
| GROUND CLEARANCE | 20 | 1 |
| FOOTREST HEIGHT FROM FLOOR (LOWEST TO HIGHEST) | 170 | 7 |
| FRONT WHEEL DIAMETER | 157 | 6 |
| REAR WHEEL DIAMETER | 192 | 8 |
| DISTANCE BETWEEN SEAT & FOOTREST | 375 | 15 |
| BOX LENGTH | 700 | 28 |
| BOX WIDTH | 374 | 15 |
| BOX HEIGHT | 1100 | 43 |

| DIMENSION | MEASUREMENT |
|--------------------------------------|-------------|
| WEIGHT OF WHEELCHAIR (NET WEIGHT) | 32 KG |
| WEIGHT WITH PACKAGING (GROSS WEIGHT) | 44 KG |
| TURNING RADIUS | 1.35 M |
| LOAD CAPACITY | 200 KG |

| TECHNICAL SPECIFICATIONS | |
|-------------------------------|---|
| PROPULSION SYSTEM | POWER-ATTENDANT |
| FRAME MATERIAL | Powder Coated Aluminium |
| FRAME COLOR | BLACK GLOSSY |
| CROSSBAR TYPE | CROSS-BRACE SYSTEM |
| CROSSBAR MATERIAL | Powder Coated Mild Steel |
| CROSSBAR COLOR | BLACK GLOSSY |
| SEAT TYPE | METAL PLATE |
| UPHOLSTREY | Rexine, Antimicrobial and Fire-Retardant |
| UPHOLSTREY COLOR | BLACK |
| EXTRA CUSHION | Headrest Cushion |
| EXTRA CUSHION COLOR | Black |
| FRONT WHEEL MATERIAL | MAG Design PP Castor - 6 Spoke With PVC Tyre |
| REAR WHEEL MATERIAL | MAG PPCP Wheel - 8 Spoke |
| REAR TYRE MATERIAL | Solid Natural PVC Tyre |
| WHEELCHAIR TYPE | Front Compact Fold |
| FOOTREST TYPE | Swing Open/Close |
| FOOTREST MATERIAL | Alumnum Frame- 25 MM |
| LEGREST TYPE | FRONT LIFT |
| BACKPOCKET | NO |
| ARMREST TYPE | SWINGABLE |
| ARMREST MATERIAL | FOAM PADDED 21CM |
| HEADREST | YES |
| ANTI TIPPER WHEELS | NO |
| PROPELLING RING | N/A |
| MANUAL BRAKES | Anti Skid Parking Brake System |
| ATTENDANT BRAKES | NO |
| BRAKING SYSTEM | ELECTRONIC BRAKING |
| PUSH HANDLES | YES |
| MOTOR | 250 Watt Brush Motors |
| BATTERY | 1 Lithium Ion Battery With 24V 12AH Rating (288 Watt-Hours) |
| FLIGHT COMPATIBILITY | N/A |
| BATTERY CHARGING TIME & RANGE | Full Charge 6-8 Hours, Range 15 Km driving on one full charge |
| CONTROLLER | Attendant Compatible, Up & Down + Voltage & Battery Display |
| CHARGING | Plug & Play In Battery |
| USAGE MODE | Automatic + Manual |
| SLOPE CLIMBING ABILITY | All |
| ANTI SLIP AUTO BRAKING | YES |
| PROVISION OF COMMODE | NO |
| CALF STRAP MATERIAL | N/A |
| SIDE GAURD MATERIAL | NO |
| ACCESORIES | Headrest Cushion Adjustable Headrest |

SUITABLE FOR USERS



SENIORS



CHILDREN



ADULTS



WOMEN



ATHLETES



PWD



PATIENTS



PREGNANT



SHORT
TERM
USERS



CEREBRAL
PALSY

SUITABLE FOR ACTIVITY



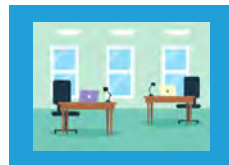
FLIGHT/TRAIN



~~CAR~~



~~BATHROOM~~



OFFICE



MARKET

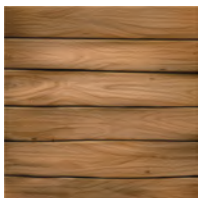


OUTDOOR

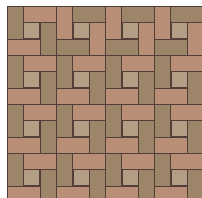
SUITABLE FOR SURFACE



TILE



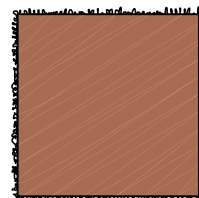
WOOD



PAVERS



ASPHALT



CARPET



~~SAND~~



~~GRAVEL~~



GRASS



आपका भरोसा, *aasraa* का वादा

your trust, aasraa's assurance

Leading brand in India for wheelchairs (manual and electric) and other mobility and orthopaedic aids



Manufactured & Marketed By:

PEAAR HEALTHTECH LLP

Plot No 12, Sector 4
Faridabad 121004, Haryana (INDIA)

(+91) 828 747 6144 | (+91) 875 005 0480

contact@peaar.co.in



www.aasraa.co.in